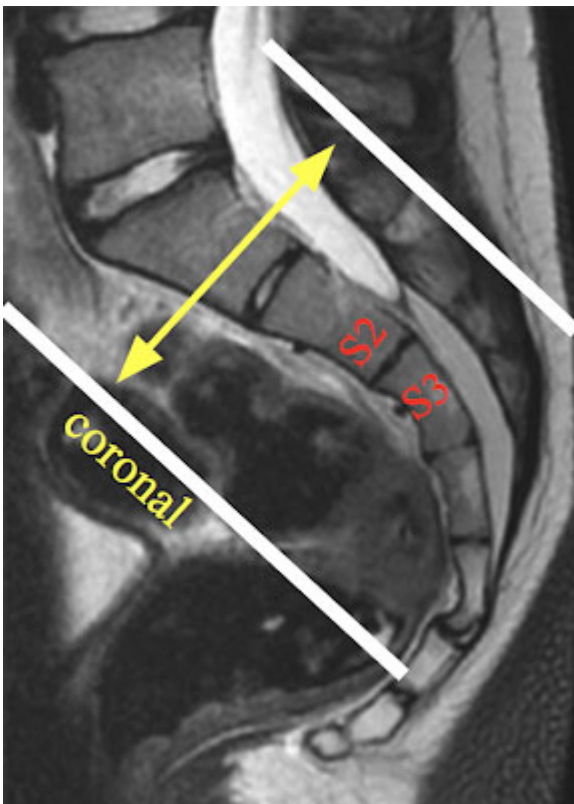


MR Sacrum – Coccyx – SI Joints

Common Histories / Key Words: Sacroiliitis, Tailbone pain, Fall, Trauma

CORONAL - Use Sagittal localizer and angle parallel to the length of the Sacrum. Center at S2-S3 disc. Cover the entire sacrum from anterior to posterior. Include the coccyx when appropriate.

- FOV: 22
- Matrix: 256 x 224 T1 and 256 x 192 STIR
- Slice Thickness / Spacing: 4 / 0.5



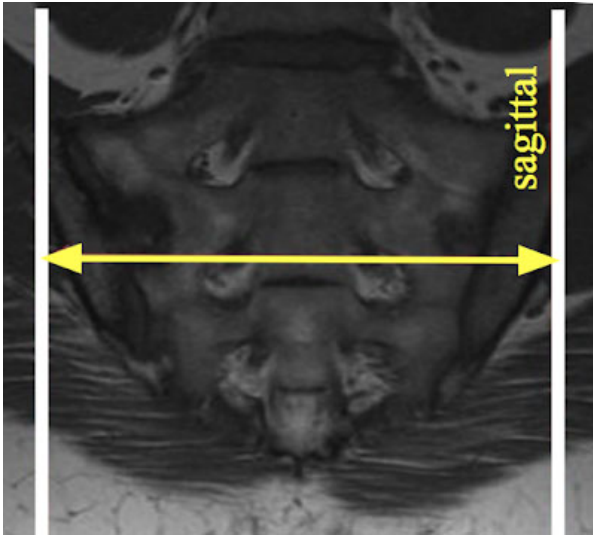
SAGITTAL - Perpendicular to the Coronal sequences. Use Coronal T1 as a guide. Coverage should include both sacroiliac Joints

- FOV: 22

Access our Modality Protocols site for all current protocols at:
www.MIARAD.com

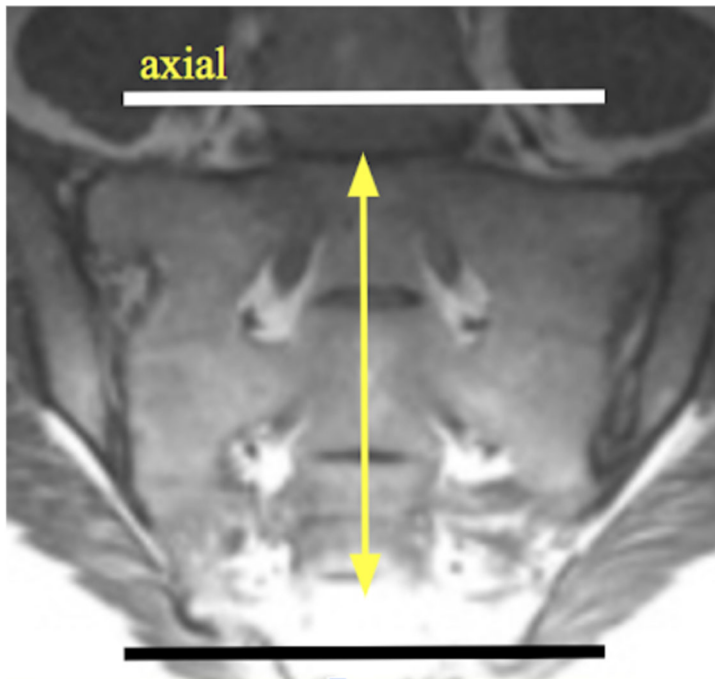
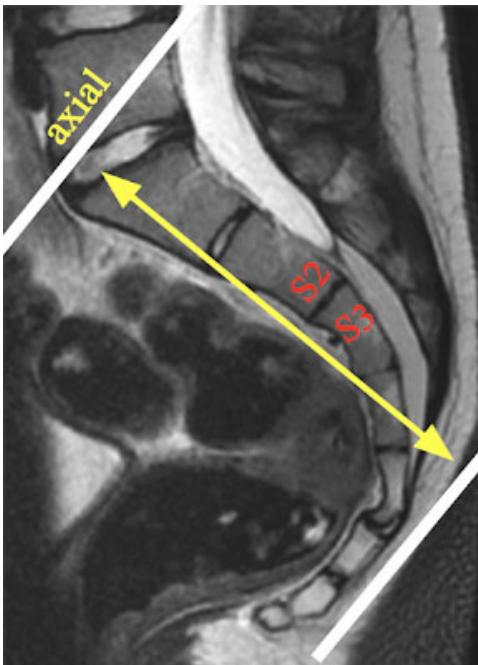
INTEGRITY | TEAMWORK | EXCELLENCE | SERVICE | ACCOUNTABILITY

- Matrix: 256 x 256
- Slice Thickness / Spacing: 4 / 0.5



AXIAL - Perpendicular to the Sagittal and Coronal sequences. Use Sagittal T1 as a guide. Cover sacrum and coccyx.

- FOV: 22
- Matrix: 256 x 224
- Slice Thickness / Spacing: 4 / 1.5



Access our Modality Protocols site for all current protocols at:
www.MIARAD.com

INTEGRITY | TEAMWORK | EXCELLENCE | SERVICE | ACCOUNTABILITY

ROUTINE SACRUM & COCCYX

- Coronal T1 and STIR (or T2 FS)
- Sagittal T1 and T2 FS
- Axial T1 and T2 FS
 - If contrast is requested, add PRE-CONTRAST Axial T1 FS and POST-CONTRAST Coronal T1 FS, Sagittal T1 FS, and Axial T1 FS

ROUTINE SACROILIAC JOINTS

- Coronal T1 and STIR (or T2 FS)
- Axial T1 and T2 FS
 - If contrast is requested, add PRE-CONTRAST Axial T1 FS and POST-CONTRAST Coronal and Axial T1 FS

Access our Modality Protocols site for all current protocols at:

www.MIARAD.com

INTEGRITY | TEAMWORK | EXCELLENCE | SERVICE | ACCOUNTABILITY

Reviewed 7-3-24